



# EDUPREPARATOR

Prepare For The Best, From The Best

## PSYCHOLOGY

CUET 2024

### PREVIOUS YEAR QUESTION PAPER

The **EDUPREPARATOR** is a ONE-STOP ACADEMY for students who are looking for guidance in CUET and various Entrance Test Examination like BBA, BCA, JOURNALISM & MASS COMMUNICATION, HM and many more.



[WWW.EDUPREPARATOR.COM](http://WWW.EDUPREPARATOR.COM)

9990901901, 9319342367, 9311902282

Address : T-1, Usha Chamber, Above Master Bakers, Deep Market, Ashok Vihar

# Congratulations!



**Saakhi Dewan**  
100 Percentile  
in CUET  
Lady Shri Ram College



**Khusharg Verma**  
100 Percentile  
in CUET  
St. Stephen College



**Priyadashi**  
99 Percentile  
in CUET  
Daulat Ram College



**Tanvi Chripal**  
99 Percentile  
in CUET  
Vivekananda College



**You Are  
Next..**

## OUR ENTRANCE TEST ACHIEVERS 2022-23



**Saakhi Dewan**  
Psychology Hons  
Lady Shri Ram  
College, DU



**Khusharg Verma**  
History Hons  
St. Stephen  
College, DU



**Priyadashi**  
Psychology Hons  
Daulat Ram  
College, DU



**Tanvi Chripal**  
Psychology Hons  
Vivekananda  
College, DU



**Rashi Ahuja**  
94 Percentile  
in CUET  
Pol Sc



**Ankur Gaba**  
93 Percentile  
in CUET  
Geography



**Sneha Jain**  
Graphic Designing  
Pearl's Academy



**Kashish Garg**  
BA (Pol Sc)  
Delhi University



**Abhay Ahuja**  
BA (JMC)  
IP University



**Saksham**  
BA(JMC) VIPS  
(IP University)



**Rishabh**  
BA (Pol Sc)  
Delhi University



**Garvit Manocha**  
BBA, Maharaja  
Agrasen  
IP University



**Jatin Gulati**  
BA(JMC) VIPS  
IP University



**Vanshika Sharma**  
BA (Pol Sc)  
Delhi University



**Diya Chauhan**  
BA (Pol Sc)  
Delhi University



**Nijil Narula**  
BCA VIPS  
IP University



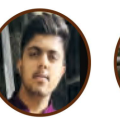
**Aarna Katyal**  
BA (Psychology)  
Delhi University



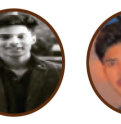
**Shivani**  
BA PROGRAM  
Delhi University



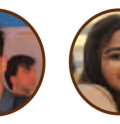
**Pratham Sarin**  
Data Science  
AKTU



**Krish**  
BA Hons  
Delhi University



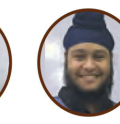
**Preet**  
B.El.Ed  
Delhi University



**Adil Khan**  
Dr. Ambedkar  
University



**Aastha Anand**  
BBA Surajmal  
IP University



**Tisha**  
BA (Eng)  
IP University



**Gagandeep Singh**  
BBA VIPS,  
IP University



**Kartik Arora**  
BA(JMC) BVP  
IP University



**Mayank Chaudhary**  
BA (Program)  
Delhi University



**Pragati Gwari**  
BBA FIA  
Delhi University

**& Many More**

## OUR ENTRANCE TEST ACHIEVERS 2021-22



**PREAL CHAUHAN**  
100 Percentile  
in Geography, Pol.Sc.  
& History



**JAHANVI SHARMA**  
100 Percentile  
in Psychology



**PLAKSHA JAMMORIA**  
99 Percentile  
in English &  
General Test



**KASHISH**  
95+ Percentile  
in Psychology, History  
and Political Science



**VANSH GUPTA**  
95+ Percentile  
in Business Studies, Eco.,  
Mathematics & Eng.



**JUHI CHAUHAN**  
95 Percentile  
in Geography &  
English



**ANKITA**  
94 Percentile  
in History



**PRASADHI SRIVASTAVA**  
90+ Percentile  
in English, Economics,  
Bus. Studies, & Acc.



**SAMYA**  
90+ Percentile  
in Geography, Pol.Sc.,  
& Psychology



**LAKSHITA**  
90+ Percentile  
in English &  
General Test



**HARSH SHARMA**  
90+ Percentile  
in Geography &  
Political Science



**KHUSHI GUPTA**  
90 Percentile  
in Psychology and  
General Test



**REEJAK**  
90 Percentile  
in English, Geography  
Pol. Sc. & General Test



**TANVISH SINGH**  
Sr. Guru Gobind  
College of  
University DU



**GAGANDEEP**  
I.P. University



**DHRUV GUPTA**  
95 Percentile  
in Business Std.  
Eco., Acc  
General Test



**MADHAV**  
Christ  
University



**ANSH GOEL**  
I.P. University



**ANGAD**  
Sri Guru Nanak  
Dev Khalsa, DU



**SUJATA**  
Delhi  
University



**RAGHAV**  
Dr. B.R. Ambedkar  
University



**DHRUV**  
Dr. B.R. Ambedkar  
University



**You Are  
Next..**

## Psychology CUET 2024 Question Paper

1. Who has used P-O-X triangle to describe the process of attitude change ?

- (1) Leon Festinger
- (2) S. M. Mohsin
- (3) Fritz Heider
- (4) Richard LaPiere

2. People who develop a fear of entering unfamiliar situations suffer from 5

- (1) Agoraphobia
- (2) Social Phobia
- (3) Social Anxiety Disorder
- (4) Separation Anxiety Disorder

3. Match List-I with List-II

	List-I		List-II
(A)	Low grades in school	(I)	Internal pressure
(B)	I must do everything perfectly'	(II)	Social pressure
(C)	Deciding between pursuing further studies or taking up a job	(III)	Frustration
(D)	Setting high performance targets for a new employee	(IV)	Conflict

Choose the correct answer from the options given below:

- (1) (A) - (II), (B) - (III), (C) - (IV), (D) - (I)
- (2) (A) - (III), (B) - (I), (C) - (IV), (D) - (II)
- (3) (A) - (III), (B) - (IV), (C) - (II), (D) - (I)
- (4) (A) - (I), (B) - (IV), (C) - (III), (D) - (II)

4. As a team leader, Anita was very popular amongst her team members as she never lost her temper in the worst of crisis situations. She was so insightful that she understood the feelings and emotions of others without them verbalising it and always maintained a harmonious environment at work. Identify the type of Intelligence displayed by Anita.

- (1) Verbal Intelligence
- (2) Emotional Intelligence
- (3) Linguistic Intelligence
- (4) Intrapersonal Intelligence

5. Assessments that are open to subjective interpretation and vary from case to case are called:

- (1) Informal Assessments
- (2) Formal Assessments
- (3) Standardised Assessments
- (4) Objective Assessments

6. Match List-I with List-II

	List-I		List-II
(A)	Rational Emotive Behaviour Therapy	(I)	Aaron Beck
(B)	Dysfunctional Cognitive Structures	(II)	Carl Rogers
(C)	Existential Therapy	(III)	Albert Ellis
(D)	Client-Centered Therapy	(IV)	Victor Frankl

Choose the correct answer from the options given below:

- (1) (A) - (III), (B) - (I), (C) - (IV), (D) - (II)
- (2) (A) - (I), (B) - (III), (C) - (II), (D) - (IV)
- (3) (A) - (I), (B) - (II), (C) - (IV), (D) - (III)
- (4) (A) - (III), (B) - (IV), (C) - (I), (D) - (II)

7. Which one of the following is NOT a feature of attitude?

- (1) Valence
- (2) Extremeness
- (3) Centrality
- (4) Dissonance

8. How many kinds of interpersonal physical distances have been mentioned by Edward Hall?

- (1) 2
- (2) 3
- (3) 4
- (4) 5





9. Rasika is a moderately obese girl who has been warned by her doctor to control the consumption of sugar. However, when asked by her dietician why she ate an entire cake, she said that she did it because the cake would have otherwise been wasted and that would be waste of money and someone's effort. Which defence mechanism is Rasika using?

- (1) Projection
- (2) Reaction Formation
- (3) Rationalisation
- (4) Denial

10. Kabir and his wife would fight bitterly everyday due to minor differences. After one such fight with his wife, Kabir left his house. After several months, he was found living in a small village with a new identity. Later after a road accident, Kabir 'woke-up' with no memory of the events in the intervening time. These symptoms indicate that Kabir is suffering from \_\_\_\_

- (1) Depersonalisation
- (2) Dissociative Identity Disorder
- (3) Derealization
- (4) Dissociative Fugue

11. Risa approached her school Counsellor to seek help during the time she was experiencing severe despair and helplessness. The Counsellor told her that she understood how Risa was feeling and what her perspective was. This kind of counselling skill is called \_\_\_\_\_

- (1) Sympathy
- (2) Empathy
- (3) Genuineness
- (4) Warmth

12. Which one of the following is the most comprehensive example of attitude?

- (1) Rashmi finds music soothing to her ears and loves it.
- (2) Neeraj has a passion for music as it destresses him. Hemakes it a point to practice his music everyday.
- (3) Jacob buys all the latest music albums for his father.
- (4) Zain's belief is that music directly connects him to his soul.

13. Identify from the following, the approach that

considers intelligence to be an aggregate of abilities and expresses the individual's performance in terms of the single index of cognitive abilities.

- (1) Information-processing approach
- (2) Psychometric approach
- (3) Cognitive assessment system
- (4) Intellectual approach

14. Hallucinations that make a person smell poison or smoke even in the absence of any of these substances are called hallucinations.

- (1) Auditory
- (2) Tactile
- (3) Olfactory
- (4) Gustratory

15. Which of the following are characteristics of a stressresistant personality as mentioned by Kobasa?

- (1) Control, Cooperation and Consistency
- (2) Consistency, Committment and Challenge
- (3) Committment, Cooperation and Consistency
- (4) Committment, Control and Challenge

16. Match List-I with List-II

	List-I		List-II
(A)	Middle Ages	(I)	Bio-psycho-socialapproach
(B)	Renaissance Period	(II)	Increased humanismand curiosity
(C)	Reform Movement	(III)	Reforms of asylumswere initiated
(D)	Recent Years	(IV)	Demonology and superstition gained importance

Choose the correct answer from the options given below:

- (1) (A) - (I), (B) - (II), (C) - (IV), (D) - (III)
- (2) (A) - (IV), (B) - (III), (C) - (II), (D) - (I)





- (3) (A) - (IV), (B) - (II), (C) - (III), (D) - (I)  
(4) (A) - (IV), (B) - (II), (C) - (I), (D) - (III)
17. At what stage of psychosexual development is Electra or Oedipus complex experienced ?  
(1) Oral  
(2) Anal  
(3) Phallic  
(4) Latency
18. In a particular class, there is a group of students who are very good friends. They became close because they travelled in the same bus since they were in Nursery. This interaction and formation of a group happened due to:  
(1) Proximity (2) Security  
(3) Status (4) Goal Achievement
19. Identify the characteristics of an outgroup:  
The group that one is a member of  
(1) They are viewed differently and perceived negatively  
(2) It is the 'we' group  
(3) All members have desirable traits
20. Which one of the following is NOT a life skill?  
(1) Stigma  
(2) Self-care  
(3) Time Management  
(4) Assertiveness
21. Sometimes cohesion can interfere with effective leadership and can lead to disastrous decisions. The Vietnam War is an example where more than 50,000 Americans and more than one million Vietnamese lost their lives. The absence of dissent in taking important decisions is called \_\_\_\_  
(1) Groupthink  
(2) Group polarisation  
(3) Group unity  
(4) Group solidarity
22. The frequency distribution for the IQ scores tends to approximate a bell-shaped curve called the \_\_\_\_  
(1) Round Curve (2) Normal Curve  
(3) Regular Curve (4) Skewed Curve
23. The level of stress that is good for the individual to achieve peak performance and manage minor crises is known as  
(1) Distress  
(2) Eustress  
(3) Internal pressure  
(4) Motivation
24. Shyam is going through a lot of stress since his father was diagnosed with a life threatening illness. Identify the emotional effects of his stress.  
(A) Increased psychological tension  
(B) Increased physical tension  
(C) Anxiety and depression  
(D) High level of concentration  
(E) Mood swings and decreased confidence  
Choose the correct answer from the options given below:  
(1) (A), (B) and (C) only  
(2) (B), (C) and (D) only  
(3) (A), (B) and (D) only  
(4) (A), (B), (C) and (E) only
25. In which therapy does the therapist teach the client to recognise the bodily processes and the emotions that are being blocked out from awareness ?  
(1) Client-centered therapy  
(2) Existential therapy  
(3) Logotherapy  
(4) Gestalt therapy
26. Advertisers use pretty models to sell their products. This is an example of changing attitude through:  
(1) Source characteristics  
(2) Target characteristics  
(3) Message characteristics  
(4) Characteristics of existing attitude
27. The Counsellor in your school has the ability to understand the motives, feelings and behaviour of other people. This helps students to bond with the Counsellor. This shows that the Counsellor is high in \_\_\_\_ intelligence.  
(1) Spatial (2) Intrapersonal  
(3) Interpersonal (4) Naturalistic
28. You use the \_\_\_\_ traits to write down the job recommendation for your junior at work.  
(1) Central (2) Cardinal



- (3) Surface (4) Secondary

29. From teacher's point of view, Intellectual Giftedness depends on a combination of the following:

- (A) High ability  
(B) High productivity  
(C) High creativity  
(D) High commitment  
(E) High academic performance

Choose the correct answer from the options given below:

- (1) (A), (B) and (C) only  
(2) (B), (C) and (D) only  
(3) (C), (D) and (E) only  
(4) (A), (C) and (D) only

30. The four Ds that describe abnormality are Distress, Deviance, Danger and \_\_\_\_

- (1) Dramatic  
(2) Dull  
(3) Despair  
(4) Dysfunction

31. Consider these two cognitions in an individual.

Cognition 1: I love fast food and chocolates.

Cognition II: I want to remain fit and active.

Which process of attitude change will help to resolve this and reduce the discomfort in the individual?

- (1) Balance theory  
(2) Cognitive Dissonance theory  
(3) The Two-step concept  
(4) The Valence theory

32. One should work hard or one should always speak the truth because 'Honesty is the best policy' is an example of

- (1) Belief  
(2) Value  
(3) Norm  
(4) Behaviour

33. \_\_\_\_\_ is an individual's preference for engaging in one or more specific activities relative to others.

- (1) Interest  
(2) Aptitude  
(3) Values

- (4) Achievement

34. A/an \_\_\_\_\_ is a collection of people who have complementary skills and are committed to a common goal.

- (1) Team  
(2) Audience  
(3) Crowd  
(4) Mob

35. 16 PF questionnaire was developed by:

- (1) Raymond Cattell  
(2) H. J. Eysenck  
(3) Sigmund Freud  
(4) J. B. Watson

36. Match List-I with List-II

	List-I (Disorders)		List-II (Symptoms)
(A)	Illness Anxiety Disorder	(I)	Characterised by extensive but selective memory loss that has no known organic cause
(B)	Post-traumatic Stress Disorder	(II)	Involves persistent pre-occupation about developing a serious illness and worrying about health
(C)	Dissociative Disorder	(III)	Symptoms may include recurrent dreams, flashback, emotional numbness, etc.
(D)	Conversion Disorder	(IV)	Reported loss of body parts or loss of some basic body functions, paralysis, blindness, deafness, etc.

Choose the correct answer from the options given below:

- (1) (A) - (I), (B) - (II), (C) - (III), (D) - (IV)  
(2) (A) - (IV), (B) - (III), (C) - (II), (D) - (I)  
(3) (A) - (II), (B) - (III), (C) - (I), (D) - (IV)  
(4) (A) - (III), (B) - (I), (C) - (IV), (D) - (II)



37. Which disorder involves persistent body-related symptoms with or without any serious medical condition?

- (1) Somatic Symptom Disorder
- (2) Illness Anxiety Disorder
- (3) Conversion Disorder
- (4) Generalised Anxiety Disorder

38. An alcoholic is given a mild electric shock and asked to smell alcohol. With repeated pairings, the smell of alcohol becomes repelling as the pain of the shock is associated with it. Gradually the person quits alcohol.

This is called \_\_\_\_\_

- (1) Aversive conditioning
- (2) Positive reinforcement
- (3) Differential reinforcement
- (4) Classical conditioning

39. The moment a mishap takes place on the road, a large number of people gather on the spot. This is an example of:

- (1) Crowd
- (2) Team
- (3) Mob
- (4) Audience

40. Match List-I with List-II

	List-I		List-II
(A)	Koh's Block Design Test	(I)	Das and Naglieri
(B)	Raven's Progressive Matrices	(II)	Performance Test
(C)	Creativity Test	(III)	Non-Verbal Test
(D)	Cognitive Assessment System	(IV)	Guilford

Choose the correct answer from the options given below:

- (1) (A) - (II), (B) - (III), (C) - (IV), (D) - (I)
- (2) (A) - (II), (B) - (IV), (C) - (III), (D) - (I)
- (3) (A) - (II), (B) - (I), (C) - (IV), (D) - (III)
- (4) (A) - (II), (B) - (III), (C) - (I), (D) - (IV)

[Click Here For CUET Test Series](#)

**HEAD OFFICE: T-1, USHA CHAMBER, ABOVE MASTER, BAKERS, ASHOK VIHAR, DELHI-52**  
**9990901901, 9319737316**

### Comprehension:

Read the passage carefully and answer the next five questions :

When Radhika was born, her father faced a big financial crisis as his business had to be shut due to COVID. Due to this shock and weak body, after giving birth to Radhika, her mother succumbed and died. Now all the relatives started calling Radhika as the unlucky one. In any ceremony, little Radhika was kept away so that she would not bring in bad luck. When Radhika started going to school, her teacher commented on how unlucky she was as she lost marks in her assignment due to carelessness. Soon, Radhika started facing a stream of negative automatic thoughts like 'I am unwanted, I am unlucky', etc. By the time she was in middle school, she went in for therapy.

41. Which therapy would be more appropriate for Radhika?

- (1) Cognitive Therapy
- (2) Rational Emotive Therapy
- (3) Existential Therapy
- (4) Behavioural Therapy

42. Due to childhood experiences, the beliefs and action patterns of Radhika led to the development of \_\_\_\_\_ in herself.

- (1) Stereotype
- (2) Core schemas
- (3) Prejudice
- (4) Cognition

43. Whenever psychological distress occurs due to irrational thoughts and beliefs, which therapy is the most effective?

- (1) Behavioural Therapy
- (2) Existential Therapy
- (3) Cognitive Therapy
- (4) Humanistic Therapy

44. How would the therapist have treated Radhika's dysfunctional schemas?

- (A) Nature of questioning was gentle rather than directive.
- (B) Made the client think in a direction opposite to that of the negative automatic thoughts.



**Scan Here For**  
**Answers & Explanation**



- (C) Her undesirable behaviour was rewarded.  
(D) The faulty behaviour was extinguished and substituted with adaptive ones.  
(E) The therapist did cognitive restructuring to reduce anxiety and depression.

Choose the correct answer from the options given below:

- (1) (A), (B) and (C) only  
(2) (B), (C) and (D) only  
(3) (C), (D) and (E) only  
(4) (A), (B) and (E) only

45. Patterns of thought in Radhika which distorted reality in a negative manner in herself, are called \_\_\_\_

- (1) Dysfunctional Cognitive Structures  
(2) Behavioural Distortion  
(3) Existential Anxiety  
(4) Errors of Schemas

**Comprehension:**

Read the passage carefully and answer the next five questions:

Prem, aged eleven, is flapping and rocking again. He sits alone in a corner, rocking back and forth while flapping his hand in front of his face as if waving goodbye to someone. He smiles, but not in response to what others are doing; the reason for the smile is locked somewhere inside Prem. His parents now recall that even as an infant, Prem was not responsive to people, did not make eye contact, smile at faces, or cuddle when picked up. As he matured, Prem's parents wondered whether he might be deaf, especially when he failed to develop normal language. Even now, he uses very immature grammar. At school, Prem is in a special class for the "emotionally compromised" and even in that class he is clearly the most unusual child.

46. Identify from the following, the disorder that Prem is suffering from.

- (1) Intellectual Disability  
(2) Autism Spectrum Disorder  
(3) Specific Learning Disability  
(4) Hyperactivity

47. Identify the correct features of the disorder that Prem is showing through the symptoms mentioned below:

- (A) Prem could be lacking in impulsivity.  
(B) Prem is flapping and rocking back and forth.

- (C) Prem as an infant was not responsive to people, did not make eye contact or smile.  
(D) Prem could be deaf/hearing impaired.  
(E) Even now he uses very immature grammar

- (1) (A), (B) and (C) only  
(2) (B), (C) and (D) only  
(3) (C), (D) and (E) only  
(4) (B), (C) and (E) only

48. Identify one significant symptom of Prem's disorder that is NOT mentioned in the case study, but is common in such children.

- (1) Flapping and Rocking  
(2) Display of stubbornness and Irritability  
(3) Self-injurious behaviour such as banging their head against the wall  
(4) Use of immature grammar

49. In which of the following categories does Prem's disorder fall into ?

- (1) Neurogenic/Neurodevelopmental disorders  
(2) Disruptive, impulse control and conduct disorders  
(3) Bipolar and related disorders  
(4) Somatic symptom and related disorders

50. About what percent of children are found to have the disorder that Prem is suffering from?

- (1) 50  
(2) 60  
(3) 70  
(4) 80



Space For Notes



**EDUPREPARATOR**

Prepare For The Best, From The Best



**WWW.EDUPREPARATOR.COM**

**9990901901,9319342367,9311902282**

# LIVE CLASSES + TEST SERIES

## AVAILABLE COURSES

CUET 2024 FULLY A.I. BASED CHAPTERWISE TEST

**HUMANITIES**

CUET SIMULATED MOCK TEST

DOMAINS

Live Online Classes + Test Series

STUDY MATERIAL

✓ General Test ✓ English Language

✓ Geography ✓ History

✓ Economics ✓ Psychology

✓ Info Practice ✓ Pol Science

9990901901, 9311902282  
www.edupreparator.com

CUET 2024 FULLY A.I. BASED CHAPTERWISE TEST

**COMMERCE**

CUET SIMULATED MOCK TEST

DOMAINS

Live Online Classes + Test Series

STUDY MATERIAL

✓ B. Studies ✓ Accountancy

✓ Mathematics ✓ Economics

✓ Informatics Practices

9990901901, 9311902282  
www.edupreparator.com

**GENERAL TEST**

**LIVE CLASSES + TEST SERIES**

ADMISSION OPEN

- > Live 60 + hr Interactive Classes + Recorded Lecture
- > 10 Full Length Mock Test of General Test
- > 14 Month Wise Current Affairs Test (Mar23-Apr 24)
- > General Test Booklets
- > Current Affairs material in PDF

**TEAM OF EXPERTS**



NIKHIL SAREEN, RAJESH SHARMA & CHAITAN SHARMA

CUET 2024 CURRENT AFFAIRS

**LIVE CLASSES + TEST SERIES**

Live Classes and recorded classes 20+ Hours

14 Month-wise Test (March 23-April 24)

PDF support Current Affairs material

Recorded Video Discussion

AI Based Test Analysis

ADMISSION OPEN



NIKHIL SAREEN  
Current Affairs Expert

**ENGLISH LANGUAGE**

**LIVE CLASSES + TEST SERIES**

ADMISSION OPEN

- > Live 20+ hr Interactive Classes + Recorded Lecture
- > 10 Full Length Mock Test of English Language
- > English Language Booklet

**TEAM OF EXPERTS**



LALI MATTHEW & RISHABH SAINI

**ENGLISH LANGUAGE + GENERAL TEST**

**LIVE CLASSES + TEST SERIES**

> 75 HR+ LIVE CLASSES AND RECORDED CLASSES

> 10 FULL LENGTH TEST OF ENGLISH LANGUAGE

> 10 FULL LENGTH TEST OF GENERAL TEST

> 14 MONTH-WISE CURRENT AFFAIRS TEST (MAR 23-APR 24) + RECORDED VIDEO DISCUSSION

> GENERAL TEST + CURRENT AFFAIRS MATERIAL

**TEAM OF EXPERTS**



LALI MATTHEW, RISHABH SAINI, NIKHIL SAREEN, RAJESH SHARMA & CHAITAN SHARMA



PREPARED BY  
**TEAM OF EXPERTS**

# TEST SERIES

## AVAILABLE COURSES

CUET 2024 FULLY A.I. BASED CHAPTERWISE TEST

**HUMANITIES**

CUET SIMULATED MOCK TEST

DOMAINS

Test Series

✓ General Test ✓ English Language

✓ Geography ✓ History

✓ Economics ✓ Psychology

✓ Info Practice ✓ Pol Science

9990901901, 9311902282  
www.edupreparator.com

**GENERAL TEST**

**TEST SERIES**

ADMISSION OPEN

- > 10 Full Length Mock Test of General Test
- > 14 Month Wise Current Affairs Test (Mar23-Apr 24)
- > General Test Booklet
- > Current Affairs material in PDF



NIKHIL SIR, RAJESH SIR  
CHAITAN SIR

CUET 2024 CURRENT AFFAIRS

**TEST SERIES**

14 Month-wise Test (March 23-April 24)

PDF support Current Affairs material

Recorded Video Discussion

AI Based Test Analysis

ADMISSION OPEN



NIKHIL SAREEN  
Current Affairs Expert

**ENGLISH LANGUAGE**

**TEST SERIES**

ADMISSION OPEN

- > 10 Full Length Mock Test of General Test
- > English Language Booklets



LALI SIR, RISHABH SIR

**ENGLISH LANGUAGE + GENERAL TEST**

**TEST SERIES**

> 10 FULL LENGTH TEST OF ENGLISH LANGUAGE

> 10 FULL LENGTH TEST OF GENERAL TEST

> 14 MONTH-WISE CURRENT AFFAIRS TEST (MAR 23-APR 24) + RECORDED VIDEO DISCUSSION

> GENERAL TEST + CURRENT AFFAIRS MATERIAL

**TEAM OF EXPERTS**



LALI MATTHEW, RISHABH SAINI, NIKHIL SAREEN, RAJESH SHARMA & CHAITAN SHARMA



Add : T-1, Usha Chamber, Above  
Master Bakers, Deep Market,  
Ashok Vihar, Delhi - 110052

SCAN QR TO  
GO TO COURSE



9990901901  
9311902282