



EDUPREPARATOR

Prepare For The Best, From The Best

BIOLOGY

CUET 2022

PREVIOUS YEAR QUESTION PAPER

SOCIAL MEDIA



www.edupreparator.com

9990901901, 9319737316

OFFLINE CENTERS - ASHOK VIHAR, PATEL NAGAR & NOIDA

Head Office : T-1, Usha Chamber, Above Master Bakers,
Deep Market, Ashok Vihar, Delhi - 52

Congratulations!



ISHITA JAIN
STATISTICS (HONS.)
HINDU COLLEGE



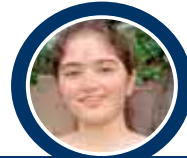
PARTH
ECONOMICS (HONS.)
HANSRAJ COLLEGE



SAAKHI DEWAN
PSYCHOLOGY (HONS.)
LADY SHRIRAM COLLEGE



KHUSHARG VERMA
HISTORY (HONS.)
ST STEPHAN COLLEGE



PREAL CHAUHAN
GEOGRAPHY (HONS.)
KIRORI MAL COLLEGE

OUR CUET & CLAT ACHIEVERS 2024



OUR CUET ACHIEVERS 2023



and Many More...

OFFLINE CENTERS - ASHOK VIHAR, PATEL NAGAR & NOIDA



Add : T-1, Usha Chamber, Above
Master Bakers, Deep Market,
Ashok Vihar, Delhi - 110052

SCAN QR TO
GO TO COURSE



www.edupreparator.com

9990901901
9319737316

Biology CUET - 2022

- Which among the following is commonly called withdrawal method?
(a) Lactational amenorrhoea
(b) Coitus interruptus
(c) Periodic abstinence
(d) Rhythm method
- Morgan hybridised *Drosophila* white eyed and yellow bodied female with red eyed and brown bodied male (wild type) and intercrossed their F₂ progeny. He observed that the two genes:
(a) Did not segregate independent of each other.
(b) May be located on two different chromosomes.
(c) Segregated independently of each other.
(d) Showed very high percentage of recombinants
- Mating of a superior male of a breed of a cattle to a superior female of another breed is called
(a) inbreeding (c) out-breeding
(b) out-crossing (d) cross-breeding
- Which one of the following is not a method of in situ conservation of biodiversity?
(a) Sacred grove
(b) Biosphere reserve
(c) Wildlife sanctuary
(d) Botanical garden
- Breeding of crops to increase the levels of essential nutrients, is called
(a) biofortification. (c) bioinformatics.
(b) biomagnification. (d) biotechnology.
- Asymptote in a logistic growth curve is obtained, when
(a) The value of 'r' approaches zero
(b) $K=N$
(c) $K>N$
(d) $K < N$
- MALT constitutes aboutper cent of the lymphoid tissue in the human body.
(a) 50% (b) 20% (c) 70% (d) 10%
- When the pollen of a flower is transferred to the stigma of another flower on the same plant, the process is known as
(a) autogamy (c) xenogamy
(b) geitonogamy (d) cleistogamy
- If the distance between two consecutive base pairs is 0.34 nm and the total number of base pairs of a DNA double helix in a typical mammalian cell is 6.6×10^9 bp, then the length of the DNA is approximately
(a) 2.0 meters (c) 2.2 meters
(b) 2.5 meters (d) 2.7 meters
- During DNA replication, Okazaki fragments are used to elongate
(a) The leading strand towards replication fork
(b) The lagging strand towards replication fork
(c) The leading strand away from replication fork
(d) The lagging strand away from the replication fork
- Intensely lactating mothers do not generally conceive due to the
(a) suppression of gonadotropins.
(b) hyper secretion of gonadotropins.
(c) suppression of gametic transport.
(d) suppression of fertilisation.
- In which of the following organisms is male heterogamety observed?
(i) Grasshopper (ii) Honey bee
(iii) Fowl
Choose the correct option:



- (a) (i) and (ii) (c) (i) and (iv)
(b) (ii) and (iii) (d) (iii) and (iv)
13. Which ecosystem has the maximum biomass?
(a) Forest ecosystem (c) Pond ecosystem
(b) Grassland ecosystem (d) Lake ecosystem
14. Eukaryotic RNA polymerase III catalyses the synthesis of
(a) mRNA (c) hnRNA
(b) rRNA (d) tRNA
15. The process of separation and purification of the expressed (recombinant) protein before marketing, is called
(a) upstream processing
(b) downstream processing
(c) bioprocessing
(d) post-production processing
16. What is the criterion for DNA fragments movement on agarose gel during gel electrophoresis?
(a) The larger the fragment size, the farther it moves
(b) The smaller the fragment size, the farther it moves
(c) Positively charged fragments move to farther end
(d) Negatively charged fragments do not move
17. Transplantation of tissues/organs fails often due to non-acceptance by the patient's body. Which type of immune-response is responsible for such rejections?
(a) Autoimmune response
(b) Cell-mediated immune response
(c) Hormonal immune response
(d) Physiological immune response
18. Ozone hole is the largest over
(a) Africa (c) America
(b) Antarctica (d) Europe
19. A gene, whose expression helps to identify transformed cells is known as
(a) selectable marker
(b) vector
(c) plasmid
(d) structural gene
20. The process of translation of mRNA to proteins begins as soon as
(a) the small subunit of the ribosome encounters mRNA. .
(b) the larger subunit of the ribosome encounters mRNA.
(c) both the subunits join together to bind with mRNA.
(d) the tRNA is activated and the larger subunit of ribosome encounters mRNA.
21. Which of the following is correctly matched for the product produced by them?
(a) Acetobacter aceti: Antibiotics
(b) Methanobacterium: Lactic acid
(c) Penicillium notatum: Acetic acid
(d) Saccharomyces cerevisiae: Ethanol
22. The development of fruits without fertilisation of the ovary, is called
(a) parthenogenesis
(b) parthenocarpy
(c) agamospermy
(d) apomixis
23. Identify the type of argument for biodiversity conservation for each of the following statements and select the correct option.
1. Ecosystem services provided by nature such as aesthetic value, pollination of crops, etc.
2. Direct economic benefits derived from nature such as food, fibre, firewood, etc.
3. Every species has an intrinsic value, even if it is not of any economic use to humans.
(a) 1. Ethical, 2. Broadly utilitarian, 3. Narrowly

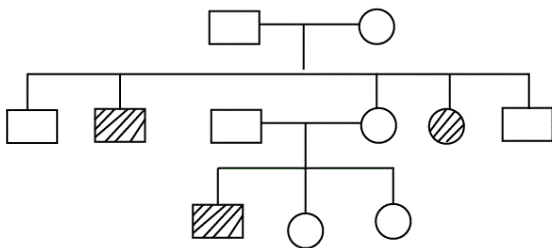


- utilitarian.
 (b) 1. Broadly utilitarian, 2. Narrowly utilitarian, 3. Ethical.
 (c) 1. Broadly utilitarian, 2. Ethical, 3. Narrowly utilitarian,
 (d) 1. Narrowly utilitarian, 2. Broadly utilitarian, 3. Ethical.

24. The DNA fragments separated on an agarose gel can be visualised after staining with
 (a) bromophenol blue
 (b) acetocarmine
 (c) aniline blue
 (d) ethidium bromide

25. A disease caused by an autosomal primary non-disjunction is
 (a) Down's syndrome
 (b) Klinefelter's syndrome
 (c) Turner's syndrome
 (d) Sickle-cell anaemia

26. Study the pedigree given below and select the probable mode of inheritance and a human trait that follows this pattern of inheritance,



- (a) Autosomal recessive, sickle cell anaemia
 (b) Sex linked recessive, Haemophilia
 (c) Autosomal dominant, Myotonic dystrophy
 (d) Sex linked dominant, colour blindness

27. The oral contraceptive pills mainly contain the hormones
 (a) estrogen and luteinising hormone.
 (b) progesterone and estrogen.

- (c) estrogens and follicle-stimulating hormone.
 (d) progesterone and follicle-stimulating hormone.

28. Meiotic division of the secondary oocyte is completed
 (a) prior to ovulation
 (b) at the time of copulation
 (c) after zygote formation
 (d) at the time of fusion of a sperm with an ovum.

29. In rice fields, a nitrogen-fixing bacterium associated with the fern Azolla is
 (a) Rhizobium (c) Anabaena
 (b) Spirulina (d) Frankia

30. The terms homothallic and monoecious are used to denote
 (a) unisexual condition
 (b) bisexual condition
 (c) staminate flowers
 (d) pistillate flowers.

31. In livestock breeding experiments, which of the following stages are transferred to surrogate mothers?
 (a) 8 to 32 celled embryo
 (b) Frozen semen
 (c) Unfertilised eggs
 (d) Fertilised eggs

32. There is no cell division involved in
 (a) spermatogenesis
 (b) oogenesis
 (c) embryogenesis
 (d) spermiogenesis

33. In *Pisum sativum*, the pod colour may be green (G) or yellow (g). What percentage of offspring with green pod colour trait would be obtained in a cross of Gg × Gg?
 (a) 25% (c) 75%
 (b) 50% (d) 90%



- (d) Inbreeding
34. Malarial fever is caused by a poisonous chemical that causes chills and a high fever that reoccurs every 3-4 days
(a) Haemozoin (c) Hirudin
(b) Interferon (d) Colostrum
35. The Earth Summit held in Rio de Janeiro in 1992 was called
(a) for immediate steps to discontinue use of CFCs that were damaging the ozone layer
(b) to reduce CO₂ emissions and global warming
(c) for conservation of biodiversity and sustainable utilisation of its benefits
(d) to assess threat posed to native species by invasive weed species.
36. The production of gametes by the parents, formation of zygotes, the F₁ and F₂ plants, can be understood from a diagram called
(a) net square (c) punch square
(b) bullet square (d) Punnett square
37. The human chromosome with the highest and the least number of genes in them are respectively
(a) Chromosome 21 and Y
(b) Chromosome 1 and X
(c) Chromosome 1 and Y
(d) Chromosome X and Y
38. Darwin's finches are an excellent example of
(a) seasonal migration
(b) brood parasitism
(c) adaptive radiation
(d) connecting links
39. By which method was a new breed 'Hisardale' of sheep formed by using Bikaneri ewes and Merino rams?
(a) Outcrossing
(b) Mutational breeding
(c) Cross breeding
40. Analogous organs arise due to
(a) divergent evolution
(b) artificial selection
(c) genetic drift
(d) convergent evolution
41. Which off the following is an example of mutation breeding?
(a) Mung bean, resistant to yellow mosaic virus
(b) Pusa Sadabahar, resistant to chilli mosaic virus
(c) Pusa Gaurav, resistant to aphids
(d) Pusa Swarnim, resistant to white rust
42. The fact that a purine base always pairs through hydrogen bonds with a pyrimidine base leads to, in the DNA double helix
(a) the antiparallel nature
(b) the semiconservative nature
(c) uniform width throughout DNA
(d) uniform length in all DNA.
43. The net electric charge on DNA and histone, is
(a) positive, negative
(b) negative, positive
(c) negative, negative
(d) positive, positive
44. Which of the following organisation is responsible for maintaining the RedData Book?
(a) IDRI
(b) IUCN
(c) UNESCO
(d) USDA'
45. In the immune system, interferons are a part of
(a) physiological barriers
(b) cellular barriers
(c) physical barriers
(d) cytokine barriers



46. In a breeding experiment, the selected male parent is diploid and the female parent is tetraploid. What will be the ploidy level of the endosperm that will develop after double fertilisation?
- (a) Diploid (c) Tetraploid
(b) Triploid (d) Pentaploid
47. Peripatus is a connecting link between
- (a) mollusca and echinodermata
(b) annelida and arthropoda
(c) coelenterata and porifera
(d) ctenophora and platyhelminthes
48. Which of the following alcoholic beverages is made without the use of distillation?
- (a) Whisky (c) Brandy
(b) Wine (d) Rum
49. Tobacco use is known to increase adrenaline and nor-adrenaline secretion. This might be caused by a component called
- (a) Tannic acid (c) Catechin
(b) Curamin (d) Nicotine
50. If the length of DNA molecule is 1.11 metres, what will be the approximate number of base pairs?
- (a) 3.3×10^9 bp
(b) 6.6×10^9 .bp
(c) 3.3×10^6 bp
(d) 6.6×10^6 bp



LIVE CLASSES + TEST SERIES

AVAILABLE COURSES

CUET 2025 FULLY A.I. BASED CHAPTERWISE TEST
HUMANITIES CUET SIMULATED MOCK TEST
 DOMAINS
 Live Online Classes + Test Series
 STUDY MATERIAL

- General Test
- English Language
- Geography
- History
- Economics
- Psychology
- Info Practice
- Pol Science

9990901901, 9311902282
 www.edupreparator.com

GENERAL TEST LIVE CLASSES + TEST SERIES **ADMISSION OPEN**

- > Live 60+ hr Interactive Classes + Recorded Lecture
- > 10 Full Length Mock Test of General Test
- > 14 Month Wise Current Affairs Test (Mar23-Apr 24)
- > General Test Booklets
- > Current Affairs material in PDF

TEAM OF EXPERTS
 NIKHIL SAREEN, RAJESH SHARMA & CHAITAN SHARMA

CUET 2025 CURRENT AFFAIRS LIVE CLASSES + TEST SERIES **ADMISSION OPEN**

- Live Classes and recorded classes 20+ Hours
- 18 Month-wise Test (Nov 23 -April 25)
- PDF support Current Affairs material
- Recorded Video Discussion
- AI Based Test Analysis

NIKHIL SAREEN
 Current Affairs Expert

CUET 2025 FULLY A.I. BASED CHAPTERWISE TEST
COMMERCE CUET SIMULATED MOCK TEST
 DOMAINS
 Live Online Classes + Test Series
 STUDY MATERIAL

- B. Studies
- Accountancy
- Mathematics
- Economics
- Informatics Practices

9990901901, 9311902282
 www.edupreparator.com

ENGLISH LANGUAGE LIVE CLASSES + TEST SERIES **ADMISSION OPEN**

- > Live 20+ hr Interactive Classes + Recorded Lecture
- > 10 Full Length Mock Test of English Language
- > English Language Booklet

TEAM OF EXPERTS
 LALI MATTHEW & RISHABH SAINI

ENGLISH LANGUAGE + GENERAL TEST LIVE CLASSES + TEST SERIES **ADMISSION OPEN**

- > 75 HR+ LIVE CLASSES AND RECORDED CLASSES
- > 10 FULL LENGTH TEST OF ENGLISH LANGUAGE
- > 10 FULL LENGTH TEST OF GENERAL TEST
- > 14 MONTH-WISE CURRENT AFFAIRS TEST (MAR 23-APR 24) + RECORDED VIDEO DISCUSSION
- > GENERAL TEST + CURRENT AFFAIRS MATERIAL

TEAM OF EXPERTS
 LALI MATTHEW, RISHABH SAINI, NIKHIL SAREEN, RAJESH SHARMA & CHAITAN SHARMA



PREPARED BY
TEAM OF EXPERTS

TEST SERIES

AVAILABLE COURSES

CUET 2025 FULLY A.I. BASED CHAPTERWISE TEST
HUMANITIES CUET SIMULATED MOCK TEST
 DOMAINS
 Test Series
 STUDY MATERIAL

- General Test
- English Language
- Geography
- History
- Economics
- Psychology
- Info Practice
- Pol Science

9990901901, 9311902282
 www.edupreparator.com

GENERAL TEST TEST SERIES **ADMISSION OPEN**

- > 10 Full Length Mock Test of General Test
- > 14 Month Wise Current Affairs Test (Mar23-Apr 24)
- > General Test Booklet
- > Current Affairs material in PDF

TEAM OF EXPERTS
 NIKHIL SIR, RAJESH SIR, CHAITAN SIR

CUET 2025 CURRENT AFFAIRS TEST SERIES **ADMISSION OPEN**

- 18 Month-wise Test (Nov 23-April 25)
- PDF support Current Affairs material
- Recorded Video Discussion
- AI Based Test Analysis

NIKHIL SAREEN
 Current Affairs Expert

CUET 2025 FULLY A.I. BASED CHAPTERWISE TEST
COMMERCE CUET SIMULATED MOCK TEST
 DOMAINS
 Test Series
 STUDY MATERIAL

- B. Studies
- Accountancy
- Mathematics
- Economics
- Informatics Practices

9990901901, 9311902282
 www.edupreparator.com

ENGLISH LANGUAGE TEST SERIES **ADMISSION OPEN**

- > 10 Full Length Mock Test of General Test
- > English Language Booklets

TEAM OF EXPERTS
 LALI SIR, RISHABH SIR

ENGLISH LANGUAGE + GENERAL TEST TEST SERIES **ADMISSION OPEN**

- > 10 FULL LENGTH TEST OF ENGLISH LANGUAGE
- > 10 FULL LENGTH TEST OF GENERAL TEST
- > 14 MONTH-WISE CURRENT AFFAIRS TEST (MAR 23-APR 24) + RECORDED VIDEO DISCUSSION
- > GENERAL TEST + CURRENT AFFAIRS MATERIAL

TEAM OF EXPERTS
 LALI MATTHEW, RISHABH SAINI, NIKHIL SAREEN, RAJESH SHARMA & CHAITAN SHARMA



Add : T-1, Usha Chamber, Above Master Bakers, Deep Market, Ashok Vihar, Delhi - 110052



9990901901
9319737316