



# EDUPREPARATOR

Prepare For The Best, From The Best

# PHYSICS

## CUET 2024

# PREVIOUS YEAR QUESTION PAPER

SOCIAL MEDIA



[www.edupreparator.com](http://www.edupreparator.com)

9990901901, 9319737316

OFFLINE CENTERS - ASHOK VIHAR, PATEL NAGAR & NOIDA

Head Office : T-1, Usha Chamber, Above Master Bakers,  
Deep Market, Ashok Vihar, Delhi - 52

# Congratulations!



**ISHITA JAIN**  
STATISTICS (HONS.)  
HINDU COLLEGE



**PARTH**  
ECONOMICS (HONS.)  
HANSRAJ COLLEGE



**SAAKHI DEWAN**  
PSYCHOLOGY (HONS.)  
LADY SHRIRAM COLLEGE



**KHUSHARG VERMA**  
HISTORY (HONS.)  
ST STEPHAN COLLEGE



**PREAL CHAUHAN**  
GEOGRAPHY (HONS.)  
KIRORI MAL COLLEGE

## OUR CUET & CLAT ACHIEVERS 2024



## OUR CUET ACHIEVERS 2023



and Many More...

OFFLINE CENTERS - ASHOK VIHAR, PATEL NAGAR & NOIDA



Add : T-1, Usha Chamber, Above  
Master Bakers, Deep Market,  
Ashok Vihar, Delhi - 110052

SCAN QR TO  
GO TO COURSE



www.edupreparator.com

9990901901  
9319737316

**CUET 2024 Physics**

1. The kinetic energy of an electron at ground level in a hydrogen atom is  $K$  units. The values of its potential energy and total energy respectively are \_\_\_\_\_

Fill in the blank with the correct answer from the options given below.

- (1)  $-2K; K$             (2)  $+2K; -K$   
 (3)  $-K, +2K$         (4)  $+K, +2K$

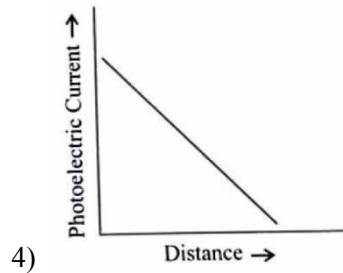
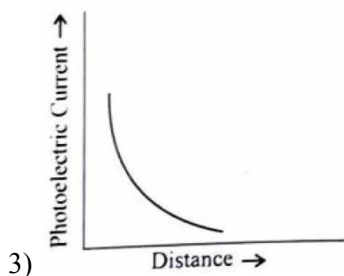
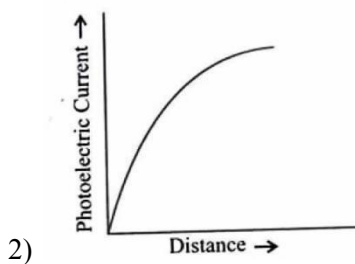
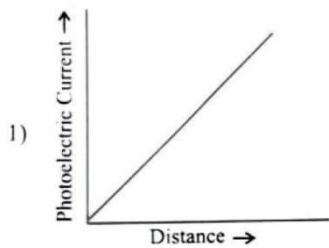
2. Two nuclei have mass numbers  $A$  and  $B$  respectively. The density ratio of the nuclei is \_\_\_\_\_

Fill in the blank with the correct answer from the options given below.

- (1)  $A: B$                 (2)  $\sqrt{A}: \sqrt{B}$   
 (3)  $A^2: B^2$             (4)  $1:1$

3. A point source causing photoelectric emission from a metallic plate is moved away from the plate. The variation of photoelectric current with distance from the source is correctly represented by the graph

Fill in the blank with the correct answer from the options given below.



4. A proton accelerated through a potential difference  $V$  has a de Broglie wavelength  $\lambda$ . On doubling the accelerating potential, de Broglie wavelength of the proton \_\_\_\_\_

Fill in the blank with the correct answer from the options given below.

- (1) remains unchanged  
 (2) becomes double  
 (3) becomes four times  
 (4) decreases

5. The shortest wavelengths emitted in hydrogen spectrum corresponding to different spectral series are as under

- (A) Pfund series  
 (B) Balmer series  
 (C) Brackett series  
 (D) Lyman series

The wavelengths arranged correctly in decreasing order are \_\_\_\_\_

Fill in the blank with the correct answer from the options given below

- (1) (A), (B), (C), (D)  
 (2) (A), (C), (B), (D)  
 (3) (B), (A), (D), (C)  
 (4) (A), (C), (D), (B)

6. Silicon can be doped using one of the following

- (A) Arsenic  
 (B) Indium  
 (C) Phosphorus  
 (D) Boron

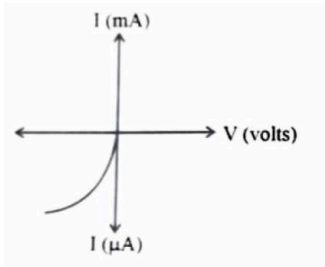
To get n-type semiconductor, the dopants that can be used are \_\_\_\_\_

Fill in the blank with the correct answer from the options given below.

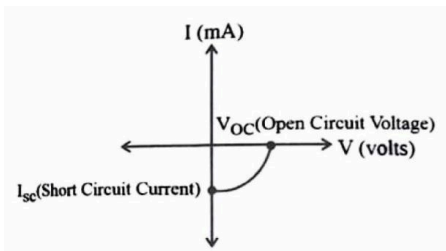
- (1) (A) and (C) only  
 (2) (B) and (C) only  
 (3) (A), (B), (C) and (D)  
 (4) (C) and (D) only



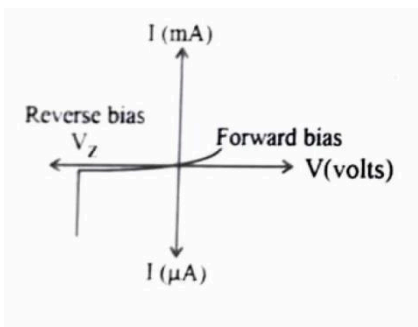
7. Given below are versus  $I$  graphs for different types of p-n junction diodes marked A, B, C and D



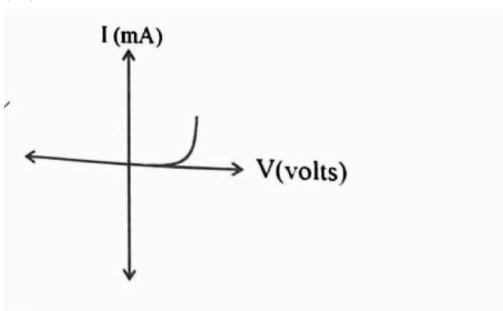
(B)



(C)



(D)



The correct sequence of graphs corresponding to forward biased p-n junction; Zener diode; Photo diode and Solar cell in order is \_\_\_\_\_

Fill in the blank with the correct answer from the options given below.

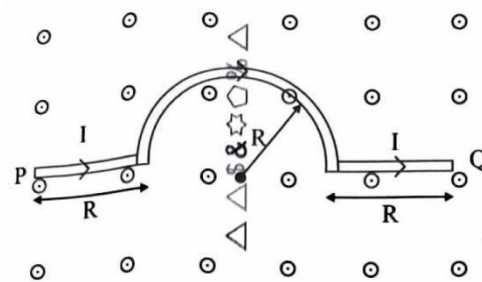
- (1) (D), (C), (A), (B)

(2) (A), (C), (B), (D)

(3) (B), (A), (D), (C)

(4) (C), (B), (D), (A)

8. A wire carrying current  $I$ , bent as shown in the figure, is placed in a uniform field  $B$  that emerges normally out from the plane of the figure. The force on this wire is \_\_\_\_\_



Fill in the blank with the correct answer from the options given below.

- (1)  $4BIR$ , directed vertically downward  
 (2)  $3BIR$ , directed vertically upward  
 (3)  $BI(2R + \pi R)$ , vertically downward  
 (4)  $2\pi BIR$ , from P to Q

9. The refractive index of the material of an equilateral prism is  $\sqrt{2}$ . The angle of minimum deviation of that prism is \_\_\_\_\_

Fill in the blank with the correct answer from the options given below.

- (1)  $60^\circ$   
 (2)  $75^\circ$   
 (3)  $30^\circ$   
 (4)  $90^\circ$

10. The transfer of integral number of \_\_\_\_\_ one of the evidence of quantization of electric charge.

Fill in the blank with the correct answer from the option given below.

- (1) photons  
 (2) nuclei  
 (3) electrons  
 (4) neutrons

11. When a slab of insulating material  $4\text{ mm}$  thick is introduced between the plates of a parallel plate capacitor of separation  $4\text{ mm}$ , it is found that the distance between the plate has to be



increased by  $3.2 \text{ mm}$  to restore the capacity to its original value. The dielectric constant of the material is \_\_\_\_\_

Fill in the blank with the correct answer from the options given below.  
 (1) 2      (2) 5      (3) 3      (4) 7

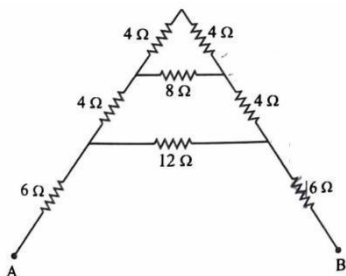
12. A copper ball of density  $8.0 \text{ g/cc}$  and  $1 \text{ cm}$  in diameter is immersed in oil of density  $0.8 \text{ g/cc}$ . The charge on the ball if it remains just suspended in oil in an electric field of intensity  $600\pi \text{ V/m}$  acting in the upward direction is \_\_\_\_\_.

Fill in the blank with the correct answer from the options given below. (Take  $g = 10 \text{ m/s}^2$ )  
 (1)  $2 \times 10^{-6} \text{ C}$       (2)  $2 \times 10^{-5} \text{ C}$   
 (3)  $1 \times 10^{-5} \text{ C}$       (4)  $1 \times 10^{-6} \text{ C}$

13. A metal wire is subjected to a constant potential difference. When the temperature of the metal wire increases, the drift velocity of the electron in it \_\_\_\_\_

Fill in the blank with the correct answer from the options given below.  
 (1) increases, thermal velocity of the electrons decreases  
 (2) decreases, thermal velocity of the electrons decreases  
 (3) increases, thermal velocity of the electrons increases  
 (4) decreases, thermal velocity of the electrons increases

14. For the given mixed combination of resistors calculate the total resistance between points A and B.



Choose the correct answer from the options given below.  
 (1)  $9 \Omega$       (2)  $18 \Omega$       (3)  $4 \Omega$       (4)  $4 \Omega$

15. A cell of emf  $1.1 \text{ V}$  and internal resistance  $0.5 \Omega$  is connected to a wire of resistance  $0.5 \Omega$ . Another cell of the same emf is now connected in series with the intention of increasing the current but the current in the wire remains the same. The internal resistance of the second cell is \_\_\_\_\_.  
 Fill in the blank with the correct answer from the options given below.  
 (1)  $1 \Omega$       (2)  $2.5 \Omega$       (3)  $1.5 \Omega$       (4)  $2 \Omega$

16. P, Q, R and S are four wires of resistances  $3, 3, 3$  and  $4 \Omega$  respectively. They are connected to form the four arms of a wheatstone bridge circuit. The resistance with which S must be shunted in order that the bridge may be balanced is \_\_\_\_\_.  
 Fill in the blank with the correct answer from the options given below  
 (1)  $14 \Omega$       (2)  $12 \Omega$       (3)  $15 \Omega$       (4)  $7 \Omega$

17. Magnetic moment of a thin bar magnet is ' $M$ '. If it is bent into a semicircular form, its new magnetic moment will be \_\_\_\_\_.  
 Fill in the blank with the correct answer from the options given below  
 (1)  $M/\pi$       (2)  $M/2$       (3)  $M$       (4)  $2M/\pi$

18. Ferromagnetic material used in Transformers must have \_\_\_\_\_.  
 Fill in the blank with the correct answer from the options given below  
 (1) Low permeability and High Hysteresis loss  
 (2) High permeability and Low Hysteresis loss  
 (3) High permeability and High Hysteresis loss  
 (4) Low permeability and Low Hysteresis loss

19. A conducting ring of radius  $r$  is placed in a varying magnetic field perpendicular to the plane of the ring. If the rate at which the magnetic field varies is  $x$  the electric field intensity at any point of the ring is \_\_\_\_\_.  
 Fill in the blank with the correct answer from the options given below.  
 (1)  $rx$       (2)  $rx/2$   
 (3)  $2rx$       (4)  $2M/\pi$

20. A  $50 \text{ Hz}$  ac current of crest value  $1 \text{ A}$  flows through the primary of a transformer. If the



mutual inductance between the primary inductance between the primary and secondary be  $0.5H$ , the crest voltage induced in the secondary is \_\_\_\_\_

Fill in the blank with the correct answer from the options given below.

- (1)  $75 V$                       (2)  $150 V$   
 (3)  $100 V$                       (4)  $200 V$

**21.** A long solenoid of diameter  $0.1 m$  has  $2 \times 10^4$  turns per meter. At the centre of the solenoid a coil of 100 turns and radius  $0.01 m$  is placed with its axis coinciding with the solenoid axis. The current in the solenoid reduces at a constant rate to  $0 A$  from  $4 A$  in  $0.05 s$ . If the resistance of the coil is  $10\pi^2 \Omega$ , then the Fill in the blank with the correct answer from the options given below.

- (1)  $16\mu C$                       (2)  $32\mu C$   
 (3)  $16\pi\mu C$                       (4)  $32\pi\mu C$

**22.** Lower half of a convex lens is made opaque. Which of the following statement describes the image of the

- object placed in front of the lens?  
 (A) No change in image  
 (B) Image will show only half of the object  
 (C) Intensity of image gets reduced

Choose the correct answer from the options given below.

- (1) (A) only                      (2) (B) only  
 (3) (C) only                      (4) (B) and (C) only

**23.** Two slits are made  $0.1 mm$  apart and the screen is placed  $2 m$  away. The fringe separation when a light of wavelength  $500 nm$  is used is \_\_\_\_\_

Fill in the blank with the correct answer from

- (1)  $1cm$                       (2)  $0.15 cm$   
 (3)  $1.5 cm$                       (4)  $0.1 cm$

**24.** For an astronomical telescope having objective lens of focal length  $10 m$  and eyepiece lens of focal length  $10 cm$ . telescope's the tube length and magnification respectively are \_\_\_\_\_

Fill in the blank with the correct answer from the? options given below

- (1)  $20 cm, 1$                       (2)  $1000 cm, 1$   
 (3)  $1010 cm, 1$                       (4)  $1010 cm, 100$

**25.** According to Bohr's Model

- (A) The radius of the orbiting electron is directly proportional to 'n'  
 (B) The speed of the orbiting electron is directly proportional to '1/n'.  
 (C) The magnitude of the total energy of the orbiting electron is directly proportional to '1/n<sup>2</sup>'  
 (D) The radius of the orbiting electron is directly proportional to 'n<sup>2</sup>'

Choose the correct answer from the options given below.

- (1) (A), (B) and (C) only  
 (2) (A), (B) and (D) only  
 (3) (A), (B), (C) and (D)  
 (4) (B), (C) and (D) only

**26.** For a full wave rectifier, if the input frequency is  $50 Hz$ , the output frequency will be \_\_\_\_\_

Fill in the blank with the correct answer from the options given below.

- (1)  $50 Hz$                       (2)  $100 Hz$   
 (3)  $25 Hz$                       (4)  $0 Hz$

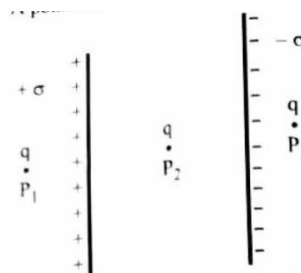
**27.** For an electric dipole in a non-uniform electric field with dipole moment parallel to direction of the field,

the force  $F$  and torque  $\tau$  on the dipole respectively are

Fill in the blank with the correct answer from the options given below.

- (1)  $F = 0, \tau = 0$   
 (2)  $F \neq 0, \tau = 0$   
 (3)  $F = 0, \tau \neq 0$   
 (4)  $F \neq 0, \tau \neq 0$

**28.** Two large plane parallel sheets shown in the figure have equal but opposite surface charges  $+\sigma$  and  $-\sigma$ . A point charge  $q$  placed at  $P_1, P_2$  and  $P_3$  experiences forces Then  $F_1, F_2$  and  $F_3$  respectively



Choose the correct answer from the options given below

Choose the correct answer

- (1)  $\vec{F}_1 = 0, \vec{F}_2 = 0, \vec{F}_3 = 0$
- (2)  $\vec{F}_1 = 0, \vec{F}_2 \neq 0, \vec{F}_3 = 0$
- (3)  $\vec{F}_1 \neq 0, \vec{F}_2 \neq 0, \vec{F}_3 \neq 0$
- (4)  $\vec{F}_1 = 0, \vec{F}_3 \neq 0, \vec{F}_2 = 0$

**29.** Two charged metallic spheres with radii  $R_1$  and  $R_2$  are brought in contact and then separated the ratio of final charges  $Q_1$  and  $Q_2$  on the two spheres respectively will be \_\_\_\_\_

Fill in the blank with the correct answer from the options given below.

- (1)  $\frac{Q_1}{Q_2} = \frac{R_2}{R_1}$
- (2)  $\frac{Q_1}{Q_2} < \frac{R_1}{R_2}$
- (3)  $\frac{Q_1}{Q_2} > \frac{R_1}{R_2}$
- (4)  $\frac{Q_1}{Q_2} = \frac{R_1}{R_2}$

**30.** Two charged particles, placed at a distance  $d$  apart in vacuum, exert a force  $F$  on each other. Now, each the charges are doubled. To keep the force unchanged, the distance between the charges should be changed to \_\_\_\_\_

Fill in the with the correct answer from the options given below.

- (1)  $4d$
- (2)  $2d$
- (3)  $d$
- (4)  $d/2$

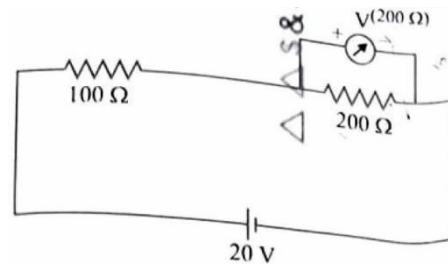
**31.** Two parallel plate capacitors of capacitances  $2\mu F$  and  $3\mu F$  are joined in series and the combination is connected to a battery of  $V$  volts. The values of potential across the two capacitors  $V_1$  and  $V_2$  and energy stored in the two capacitors  $U_1$  and  $U_2$  respectively are related as \_\_\_\_\_

Fill in the blank with the correct answer from the options given below.

- (1)  $\frac{V_1}{V_2} = \frac{U_1}{U_2} = \frac{3}{2}$
- (2)  $\frac{V_1}{V_2} = \frac{U_1}{U_2} = \frac{2}{3}$

- (3)  $\frac{V_1}{V_2} = \frac{3}{2}$  and  $\frac{U_1}{U_2} = \frac{2}{3}$
- (4)  $\frac{V_1}{V_2} = \frac{2}{3}$  and  $\frac{U_1}{U_2} = \frac{3}{2}$

**32.** Two resistances of  $100\Omega$  and  $200\Omega$  are connected in series across a  $20V$  battery as shown in figure below. The reading in a  $200\Omega$  voltmeter connected across series across a  $200\Omega$  resistance is \_\_\_\_\_



Fill in the blank with the correct answer from the options given below.

- (1)  $4V$
- (2)  $\frac{20}{3}V$
- (3)  $10V$
- (4)  $16V$

**33.** The current through a  $4/3\Omega$  external resistance connected to a parallel combination of two cells of  $2V$  and  $1V$  emf and internal resistances of  $1\Omega$  and  $2\Omega$  respectively is \_\_\_\_\_

Fill in the blank with the correct answer from the options given below.

- (1)  $1A$
- (2)  $2/3A$
- (3)  $3/4A$
- (4)  $5/6A$

**34.** A metallic wire of uniform area of cross section has a resistance  $R$ , resistivity  $\rho$  and power rating  $P$  at  $V$  volts. The wire is uniformly stretched to reduce the radius to half the original radius. The values of resistance, resistivity and power rating at  $V$  volts are now denoted by  $R'$ ,  $\rho'$  and  $P'$  respectively. The corresponding values are correctly related as \_\_\_\_\_

Fill in the blank with the correct answer from the options given below.

- (1)  $\rho' = 2\rho, R' = 2R, P' = 2P$
- (2)  $\rho' = (1/2)\rho, R' = (1/2)R, P' = (1/2)P$
- (3)  $\rho' = \rho, R' = 16R, P' = (1/16)P$
- (4)  $\rho' = \rho, R' = (1/16)R, P' = 16P$



35. Three magnetic materials are listed below  
 (A) paramagnetics  
 (B) diamagnetic  
 (C) ferromagnetics

Choose the correct order of the materials increasing order of magnetic susceptibility

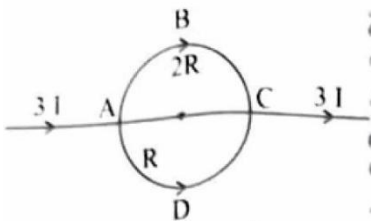
- (1) (A), (B), (C)      (2) (C), (A), (B)  
 (3) (B), (A), (C)      (4) (B), (C), (A)

36. Two infinitely long straight parallel conductors carrying currents  $I_1$  and  $I_2$  are held at a distance  $d$  apart in a vacuum. The force  $F$  on a length  $L$  of one of the conductors due to the other is \_\_\_\_\_

Fill in the blank with the correct answer from the options given below.

- (1) proportional to  $L$  but independent of  $I_1 \times I_2$   
 (2) proportional to  $I_1 \times I_2$  but independent of length  $L$   
 (3) proportional to  $I_1 \times I_2 \times L$   
 (4) proportional to  $\frac{L}{I_1 \times I_2}$

37. In a current  $3I$  enters at A. The semicircular parts ABC and ADC have equal radii 'r' but resistances  $2R$  and  $R$  respectively. The magnetic field the center of the circular loop ABCD is \_\_\_\_\_



Fill in the blank with the correct answer from the options given below.

- (1)  $\frac{\mu_0 I}{4r}$  out of the plane      (2)  $\frac{\mu_0 I}{4r}$  into the plane  
 (3)  $\frac{\mu_0 3I}{4r}$  out of the plane      (4)  $\frac{\mu_0 3I}{4r}$  into the plane

38. A square loop with each side 1 cm, carrying a current of 10 A, is placed in a magnetic field of 0.2 T. The direction of the magnetic field is parallel to the plane of the loop. The torque experienced by the loop is \_\_\_\_\_

Fill in the blank with the correct answer from the options given below.

Fill in the blank with the correct answer from the options given below

- (1) zero      (2)  $2 \times 10^{-4} Nm$   
 (3)  $2 \times 10^{-2} Nm$       (4)  $2 Nm$

39. In an ac circuit, the current leads the voltage by  $\pi/2$ . The circuit is \_\_\_\_\_

Fill in the blank with the correct answer from the options given below.

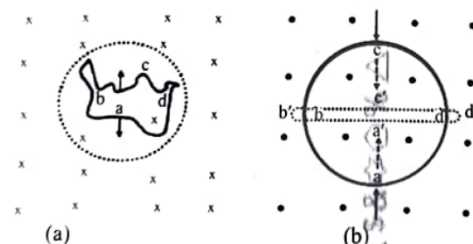
- (1) purely resistive  
 (2) should have circuit elements with resistance equal to reactance.  
 (3) purely inductive  
 (4) purely capacitive

40. In a pair of adjacent coils, for a change of current in one of the coils from 0 A to 10 A in 0.25 s, the magnetic flux in the adjacent coil changes by 15 Wb. The mutual inductance of the coils is \_\_\_\_\_

Fill in the blank with the correct answer from the options given below.

- (1) 120 H      (2) 12 H      (3) 1.5 H      (4) 0.75 H

41. A wire of irregular shape in figure (a) and a circular loop of wire in figure (b) are placed in different uniform magnetic fields as shown in the figures below. In figure (a), the magnetic field is perpendicular into the plane. In figure (b), the magnetic field is perpendicular out of the plane.



The wire in figure (a) is turning into a circular loop and that in figure (b) into a narrow straight wire. The direction of induced current will be \_\_\_\_\_

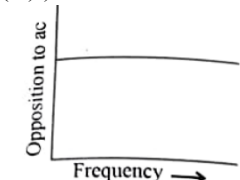
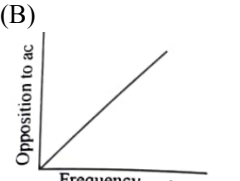
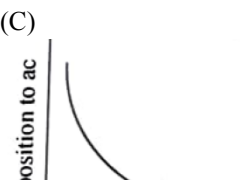
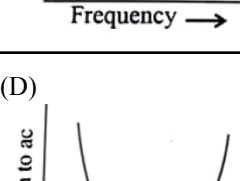
Fill in the blank with the correct answer from the options given below.

- (1) clockwise in both (a) and (b)  
 (2) anticlockwise in both (a) and (b)  
 (3) clockwise in (a) and anticlockwise in (b)  
 (4) anticlockwise in (a) and clockwise in (b)





42. Match List-I has four graphs showing variation of opposition to flow of ac versus frequency with circuit characteristic in List-II.

List I	List II
(A) 	(1) Impedance
(B) 	(2) Capacitive reactance
(C) 	(3) Inductive reactance
(D) 	(4) Resistance

Choose the correct answer from the options given below.

- (1) (A) - (I), (B) - (II), (C) - (III), (D) - (IV)
- (2) (A) - (IV), (B) - (III), (C) - (II), (D) - (I)
- (3) (A) - (I), (B) - (II), (C) - (IV), (D) - (III)
- (4) (A) - (III), (B) - (IV), (C) - (I), (D) - (II)

43. In an electromagnetic wave, the ratio of energy densities of electric and magnetic fields is \_\_\_\_\_

Fill in the blank with the correct answer from the options given below.

- (1) 1:1
- (2) 1:c
- (3) c:1
- (4) 1:c<sup>2</sup>

44. Of the following, the correct arrangement of electromagnetic spectrum in decreasing order of wavelength is \_\_\_\_\_

Fill in the blank with the correct answer from the options given below.

- (1) Radio waves, X-rays, Infrared waves, microwaves, visible waves
- (2) Infrared waves, microwaves, Radio waves, X-rays, visible waves
- (3) Radio waves, microwaves, Infrared waves, visible waves, X-rays
- (4) X-rays, visible waves, Infrared waves, microwaves, Radio waves

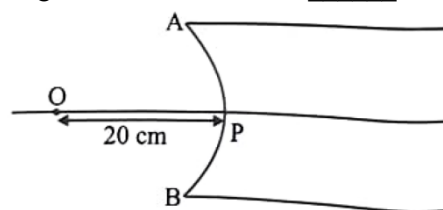
45. Match Electromagnetic waves listed in column I with Production method/device in column II.

Column-I Electromagnetic waves		Column-II Production method/device	
(A)	Microwaves	(I)	LC oscillator
(B)	Infrared	(II)	Magnetron:
(C)	X-rays	(III)	Vibration of atoms/molecules
(D)	Radio waves	(IV)	Bombarding large atomic number metal target with fast moving electrons

The correctly matched combination is as in option:

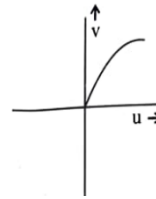
- (1) (A)-(I), (B) - (II), (C) - (III), (D) - (IV)
- (2) (A) - (II), (B) - (III), (C) - (IV), (D) - (I)
- (3) (A)-(II), (B) - (I), (C) - (IV), (D) - (III)
- (4) (A) - (III), (B) - (IV), (C) - (I), (D) - (II)

46. In the figure given below, APB is a curved surface of radius of curvature 10 cm separating air and a transparent material ( $\mu = 4/3$ ). A point object O is placed in air on the principal axis of the surface 20 cm from P. The distance of the image of O from P will be \_\_\_\_\_



Fill in the blank with the correct answer from the options given below.

- (1) 16 cm left of P in air
- (2) 16 cm right of P in water
- (3) 20 cm right of P in water
- (4) 20 cm left of P in air



(4)

47. For fixed values of radii of curvature of lens, power of the lens will be \_\_\_\_\_

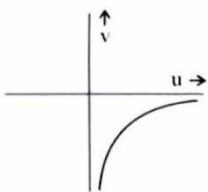
Fill in the blank with the correct answer from the options given below.

- (1)  $P \propto (\mu - 1)$
- (2)  $P \propto \mu^2$
- (4)  $P \propto \mu^{-2}$
- (3)  $P \propto 1/\mu$

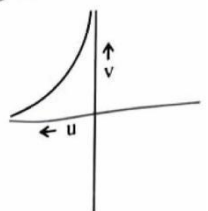
48. The graph correctly representing the variation of image distance 'v' for a convex lens of focal length 'f' versus object distance 'u' is \_\_\_\_\_

Fill in the blank with the correct answer from the options given below.

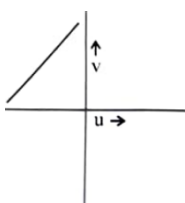
(1)



(2)



(3)



49. Using light from a monochromatic source to study diffraction in a single slit of width  $0.1 \text{ mm}$ , the linear width of central maxima is measured to be  $5 \text{ mm}$  on a screen held  $50 \text{ cm}$  away. The wavelength of light used is \_\_\_\_\_

Fill in the blank with the correct answer from the options given below.

- (1)  $2.5 \times 10^{-7} \text{ m}$
- (2)  $4 \times 10^{-7} \text{ m}$
- (3)  $5 \times 10^{-7} \text{ m}$
- (4)  $7.5 \times 10^{-7} \text{ m}$

50. Radiation of frequency  $2\nu_0$  is incident on a metal with threshold frequency  $\nu_0$ . The correct statement of the following is \_\_\_\_\_

Fill in the blank with the correct answer from the options given below.

- (1) No photoelectrons will be emitted
- (2) All photoelectrons emitted will have kinetic energy equal to  $h\nu_0$
- (3) Maximum kinetic energy of photoelectrons emitted can be  $h\nu_0$
- (4) Maximum kinetic energy of photoelectron emitted will be  $2h\nu_0$



# LIVE CLASSES + TEST SERIES

## AVAILABLE COURSES

**CUET 2025** FULLY A.I. BASED CHAPTERWISE TEST  
**HUMANITIES** CUET SIMULATED MOCK TEST  
 DOMAINS  
 Live Online Classes + Test Series  
 STUDY MATERIAL

- General Test
- English Language
- Geography
- History
- Economics
- Psychology
- Info Practice
- Pol Science

9990901901, 9311902282  
 www.edupreparator.com

**GENERAL TEST** LIVE CLASSES + TEST SERIES  
 ADMISSION OPEN

- > Live 60+ hr Interactive Classes + Recorded Lecture
- > 10 Full Length Mock Test of General Test
- > 14 Month Wise Current Affairs Test (Mar23-Apr 24)
- > General Test Booklets
- > Current Affairs material in PDF

**TEAM OF EXPERTS**  
 NIKHIL SAREEN, RAJESH SHARMA & CHAITAN SHARMA

**CUET 2025** CURRENT AFFAIRS LIVE CLASSES + TEST SERIES  
 ADMISSION OPEN

- Live Classes and recorded classes 20+ Hours
- 18 Month-wise Test (Nov 23 -April 25)
- PDF support Current Affairs material
- Recorded Video Discussion
- AI Based Test Analysis

**NIKHIL SAREEN**  
 Current Affairs Expert

**CUET 2025** FULLY A.I. BASED CHAPTERWISE TEST  
**COMMERCE** CUET SIMULATED MOCK TEST  
 DOMAINS  
 Live Online Classes + Test Series  
 STUDY MATERIAL

- B. Studies
- Accountancy
- Mathematics
- Economics
- Informatics Practices

9990901901, 9311902282  
 www.edupreparator.com

**ENGLISH LANGUAGE** LIVE CLASSES + TEST SERIES  
 ADMISSION OPEN

- > Live 20+ hr Interactive Classes + Recorded Lecture
- > 10 Full Length Mock Test of English Language
- > English Language Booklet

**TEAM OF EXPERTS**  
 LALI MATTHEW & RISHABH SAINI

**ENGLISH LANGUAGE + GENERAL TEST** LIVE CLASSES + TEST SERIES  
 ADMISSION OPEN

- > 75 HR+ LIVE CLASSES AND RECORDED CLASSES
- > 10 FULL LENGTH TEST OF ENGLISH LANGUAGE
- > 10 FULL LENGTH TEST OF GENERAL TEST
- > 14 MONTH-WISE CURRENT AFFAIRS TEST (MAR 23-APR 24) + RECORDED VIDEO DISCUSSION
- > GENERAL TEST + CURRENT AFFAIRS MATERIAL

**TEAM OF EXPERTS**  
 LALI MATTHEW, RISHABH SAINI, NIKHIL SAREEN, RAJESH SHARMA & CHAITAN SHARMA



PREPARED BY  
**TEAM OF EXPERTS**

# TEST SERIES

## AVAILABLE COURSES

**CUET 2025** FULLY A.I. BASED CHAPTERWISE TEST  
**HUMANITIES** CUET SIMULATED MOCK TEST  
 DOMAINS  
 Test Series  
 STUDY MATERIAL

- General Test
- English Language
- Geography
- History
- Economics
- Psychology
- Info Practice
- Pol Science

9990901901, 9311902282  
 www.edupreparator.com

**GENERAL TEST** TEST SERIES  
 ADMISSION OPEN

- > 10 Full Length Mock Test of General Test
- > 14 Month Wise Current Affairs Test (Mar23-Apr 24)
- > General Test Booklet
- > Current Affairs material in PDF

**TEAM OF EXPERTS**  
 NIKHIL SIR, RAJESH SIR, CHAITAN SIR

**CUET 2025** CURRENT AFFAIRS TEST SERIES  
 ADMISSION OPEN

- 18 Month-wise Test (Nov 23-April 25)
- PDF support Current Affairs material
- Recorded Video Discussion
- AI Based Test Analysis

**NIKHIL SAREEN**  
 Current Affairs Expert

**CUET 2025** FULLY A.I. BASED CHAPTERWISE TEST  
**COMMERCE** CUET SIMULATED MOCK TEST  
 DOMAINS  
 Test Series  
 STUDY MATERIAL

- B. Studies
- Accountancy
- Mathematics
- Economics
- Informatics Practices

9990901901, 9311902282  
 www.edupreparator.com

**ENGLISH LANGUAGE** TEST SERIES  
 ADMISSION OPEN

- > 10 Full Length Mock Test of General Test
- > English Language Booklets

**TEAM OF EXPERTS**  
 LALI SIR, RISHABH SIR

**ENGLISH LANGUAGE + GENERAL TEST** TEST SERIES  
 ADMISSION OPEN

- > 10 FULL LENGTH TEST OF ENGLISH LANGUAGE
- > 10 FULL LENGTH TEST OF GENERAL TEST
- > 14 MONTH-WISE CURRENT AFFAIRS TEST (MAR 23-APR 24) + RECORDED VIDEO DISCUSSION
- > GENERAL TEST + CURRENT AFFAIRS MATERIAL

**TEAM OF EXPERTS**  
 LALI MATTHEW, RISHABH SAINI, NIKHIL SAREEN, RAJESH SHARMA & CHAITAN SHARMA



Add : T-1, Usha Chamber, Above Master Bakers, Deep Market, Ashok Vihar, Delhi - 110052



**9990901901**  
**9319737316**